



HAWK 6000

CONTROL SYSTEM

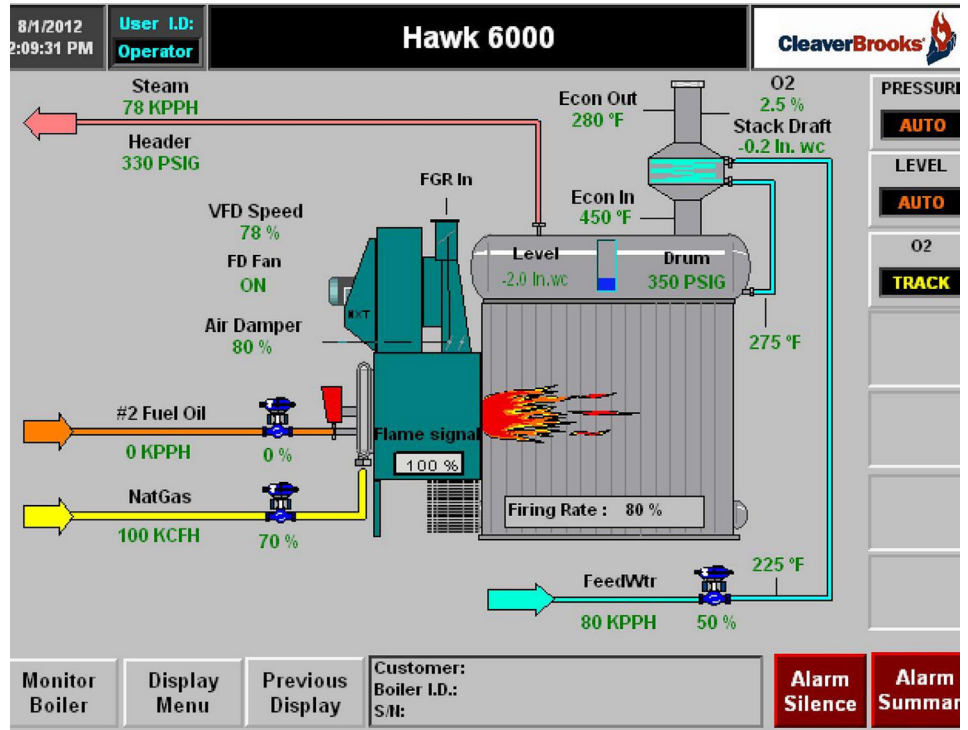
A COMPLETE BOILER ROOM SOLUTION WITH MAXIMUM EFFICIENCY

The Hawk 6000 is a complete boiler control system designed to North American standards (UL, NFPA 85 or CSA B149.3) for the institutional and industrial markets

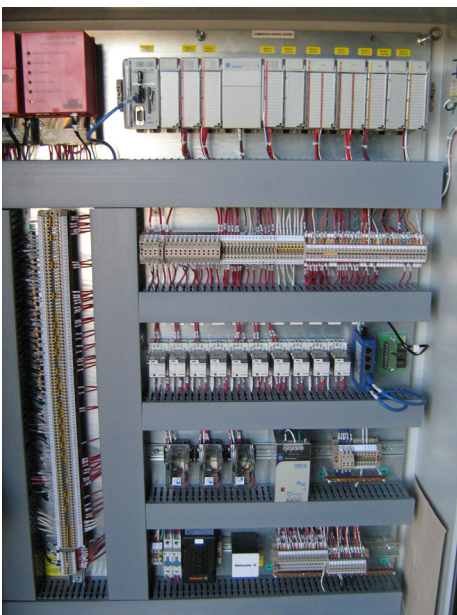
The Hawk 6000 can be supplied on new industrial watertube boiler projects or retrofit applications

This preconfigured boiler/burner control system will save commissioning time and money

The result is unsurpassed performance when coupled with a C-B industrial burner system



Distinctive HMI screen design



Panel internal layout

Cutting edge combustion control logic in a user-friendly environment

Fully configured and tested at factory for **easy commissioning from HMI**

Pre-characterized inputs and outputs to obtain linear response at all boiler loads and avoids tedious f(x) entries

All Hawk 6000 systems include Ethernet communication, first out and alarm history, local or remote steam demand and much more

Supplied with complete set of documentation meeting industry standards

After-sale support by factory control system engineer and/or field service technician

Training program available

Hawk 6000 Standard and Optional Features



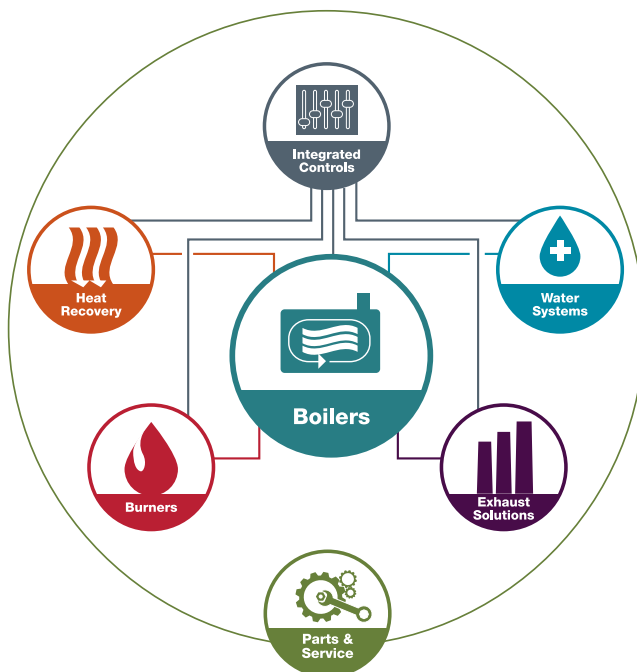
	STANDARD	OPTIONAL
Processor L33ER	✓	
10" Panel View Plus 6 Color Touch Screen	✓	
Nema 12	✓	
Nema 4		✓
Nema 4X		✓
FireyeCB 120E	✓	
One Fuel	✓	
Two Fuels		✓
Drum Level 1 Element	✓	
Drum Level 2 Elements		✓
Drum Level 3 Elements		✓
Draft Control		✓
O2 trim		✓
FGR		✓
Variable Speed Drive		✓
Single Point Positioning (jackshaft)	✓	
Parallel Positioning		✓
Full Metering		✓
Economizer Flue Gases Outlet Temp Input		✓
Economizer Feedwater Inlet Temp Input		✓
Economizer Feedwater Outlet Temp Input		✓
Expanded Annunciation	✓	
Ethernet Communication	✓	
Ethernet Switch	✓	
Lan/Wan Interfacing		✓
Building Automation Interface		✓
Remote Start/Stop	✓	
PLC Based Combustion Control	✓	
Flash Card Reader - Processor	✓	
Alarm History	✓	
Alarm Horn	✓	
Alarm Silencer Button Via Touch Screen	✓	
Custom Options: Contact Factory	✓	

Engineering Data

- ▶ Supply Voltage: 120 VAC (+10%/-15%), 50 or 60 Hz
- ▶ Maximum Total Connected Load: 1800 VA
- ▶ Operating Temperature Limits: 32° to 130° F
- ▶ 85% RH Continuous, Non-Condensing, Humidity 0.5G Continuous Vibration

DIMENSIONAL DATA

Height (wall-mounted)	48"
Height (free-standing option)	78"
Width	36"
Depth	12"
Weight (wall-mounted)	230lbs
Weight (free-standing option)	250lbs



Total Integration goes far beyond controls.

For more than 80 years, Cleaver-Brooks has built a reputation for innovation in the boiler solutions industry. We remain committed to introducing technology and products that enable a more energy-efficient and environmentally friendly generation of steam and hot water boilers.

When you come to us for fully integrated controls solutions, you can know that each element is created to the highest standards and all will work together seamlessly to give you a highly efficient and reliable solution. To learn more, please call or visit us online.



Packaged Boiler Systems
 221 Law Street, Thomasville, GA 31792 USA
 800.250.5883 • info@cleaverbrooks.com
cleaverbrooks.com