

INTRODUCTION

Based on ABB Totalflow XSeries technology, the XFC^{G4} 6200EX series offers an explosion proof product for differential or linear metering and automation systems. The XFC^{G4} 6200EX series are accurate, reliable flow computers with the capability to measure and monitor gas flow in compliance with AGA, API and ISO standards. These units are expandable, provide exceptional control and meet many automation requirements.



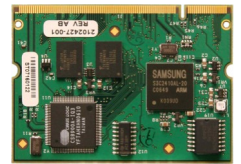
DESCRIPTION

The XFC^{G4} 6200EX includes an integrated high accuracy digital sensor (EXIMV) to measure differential pressure, static pressure and temperature from a single differential primary measurement device. The XFC^{G4} 6201EX includes an integrated high accuracy digital sensor to measure static pressure and temperature plus an onboard pulse input or serial input from a single linear/ultrasonic or Coriolis primary measurement device. With the exception of the integrated sensors, both models are identical (software, I/O, communications and electronics). The XFC^{G4} 6200EX series has multi-tube measurement capability. Up to 8 differential measurement applications per RS-485 communications port when utilizing MODBUS multivariable sensors (plus 1 tube type application utilizing the integrated sensor) are possible. The number of linear meter applications is limited by the available I/O and device configuration. Additional "tube" or measurement applications are easily invoked with simple user or factory configuration.

The XFC^{G4} 6200EX series feature a powerful 203Mhz ARM920T 32 bit microprocessor, Windows CE operating system and utilizes a unique "engine card" design. The engine card contains the processor, application firmware and memory components. The processing and memory capability of this device, allows the user to run more applications faster than ever before.

Standard

- Explosion proof enclosure
- LCD display (4 X 16)
- Main electronics board
- Engine card with 203 Mhz processor
- Termination board
- 1 10BaseT Ethernet port (RJ45 on main board)
- 2 RS232/485 software selectable com ports for remote communications
- 3 local configuration ports are available. Serial or USB are available to the optional external PCCU connection and Class I Bluetooth is standard.
- Externally powered from 9 to 30VDC
- Onboard User IO : 1 AI, 1 DI/PI, 1 DO
- Access to optional I/O daughter card
- 64MB FLASH (Program Storage/Configuration)
- 32MB RAM (Program Execution/Data Storage)
- Integral multivariable transducer (EXIMV). DP/SP or SP only



Optional

- Twelve (12) I/O point daughter card
- Manifold
- Externally accessible local communications fixture (USB or Serial)
- 100 ohm platinum RTD
- Mounting Kit
- Separate battery backup, power supply package



Totalflow consistently provides new and innovative products and systems in support of accurate, reliable and auditable gas measurement. As such, the XFC^{G4} 6200/6201EX includes features grounded on a thorough understanding of the natural gas industry's custody transfer and measurement needs.



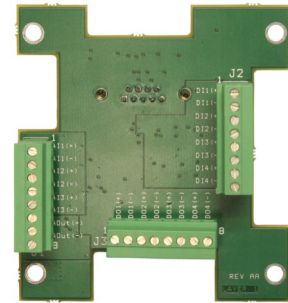
FEATURES

- Low cost, high reliability design
- Cast Aluminum enclosure, powder coated
- Low power consumption
- LCD 4 × 16 character display standard
- Stable time base (accurate integration)
- User selectable simple dual level security code data protection or enhanced user configurable Role Based Access Control (RBAC)
- Monitors operation limits for detection, and reporting of abnormal conditions
- Complies with API 21.1 standard for custody transfer devices
- 40+ days historical records (user configurable for additional hourly and daily data records)
- Full calculation of flow rates, volumes and energy in accordance with AGA 3-85, AGA 3-92, ISO-5167 and AGA-5 once per second
- Support for gas orifice, linear, Coriolis primary elements
- Super compressibility calculations per NX-19, AGA8-92 Gross or Detail, ISO 12213-2
- Smart (temperature and pressure compensated) integral, factory calibrated, multi-variable smart sensor
- Flow retention during user sensor calibration
- Selectable 3 or 5 point user calibration; DP, SP and RTD (RTD also supports single point bias/offset adjustment).
- 100 ohm platinum RTD resistance curve fit with user programmable single point offset or 3/5 point user calibration for RTD input
- 100 ohm platinum RTD
- Programmable DP no flow cut-off
- Software selectable (RS232/RS485/RS422) communications ports
- Hazardous Area Certifications: CSA C/US, ATEX and IECEx

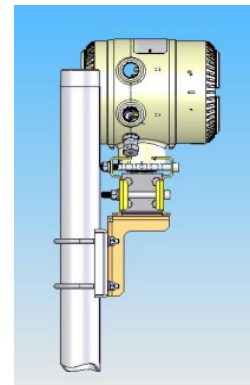
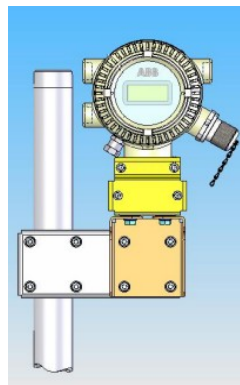
- Type 3R/IP53 (with breather-drain option); Type 4X/IP66 without breather-drain option
- Real time clock (lithium battery powered)
- Advanced embedded data logger
- Multi-tube capability
- Programmable alarm filtering and exception reporting capabilities
- Multiple protocol options including Totalflow packet protocol and various MODBUS protocols
- User programmable MODBUS registers
- User programmable math and logic (EZ Blocks)
- IEC 61131 user programming environment
- I/O expansion via optional daughter card
- Software control of power to communications equipment

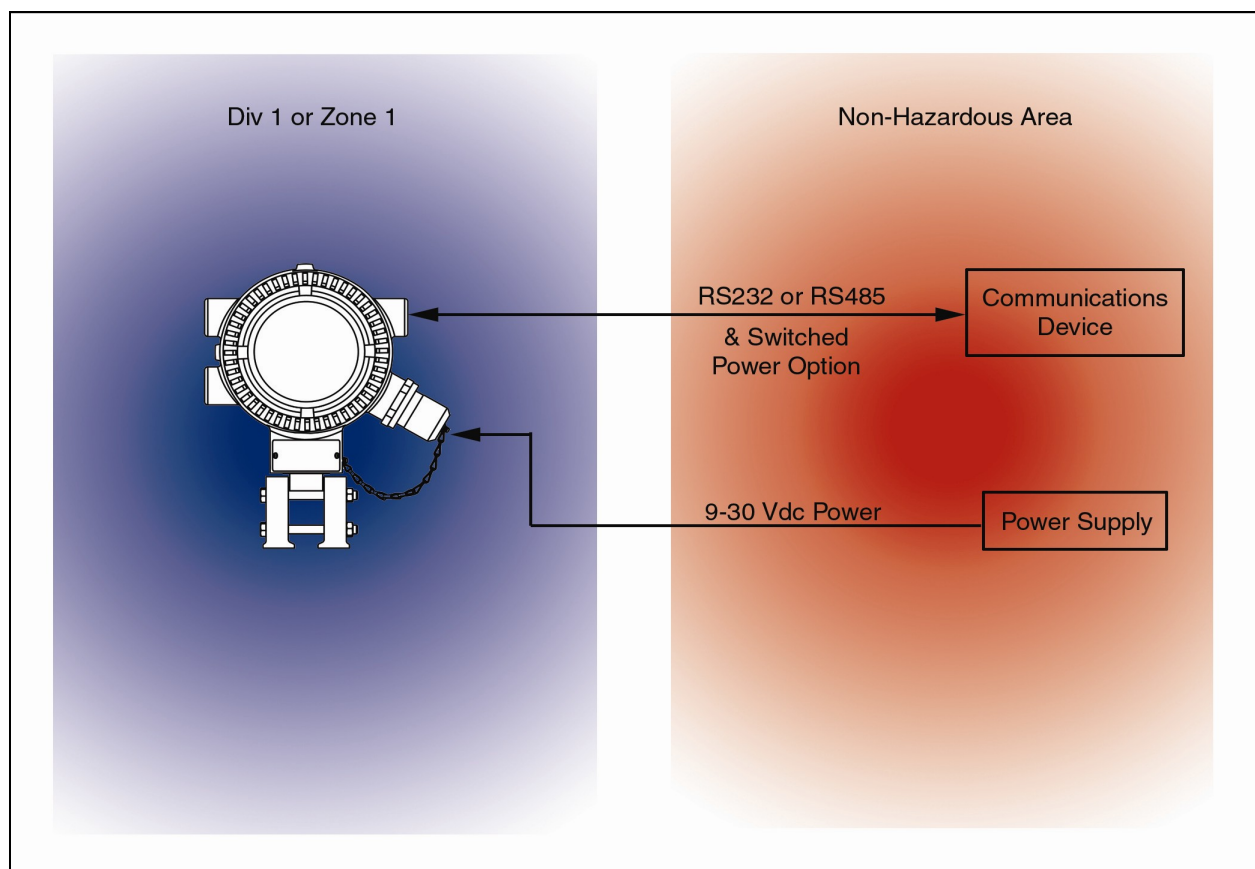
HARDWARE MODULARITY

Hardware functionality of the XFC^{G4} 6200/6201EX can be extended in a flexible and simple way by adding an optional I/O daughter card. The system recognizes the additional I/O automatically and configures the I/O Scanner subsystem accordingly.



The I/O Daughter Card provides an additional 12 I/O points to the XFC^{G4} 6200/6201EX. The I/O is fixed with a combination of Analog and Digital points. The analog point configuration is comprised of three (3) 0-10V (10K ohm impedance) inputs and one (1) 0-20mA output. (The analog output is a "SINK" mode and must be used in conjunction with an external power source) The digital point configuration is comprised of four (4) digital inputs and four (4) digital outputs. The digital inputs also function as event counters and are capable of accepting NAMUR type sensor signals. The digital outputs are optically-






isolated type 1A switches capable of switching 200mA of 48VDC or 40VAC at 60°C (140°F).

SOFTWARE MODULARITY

The software platform represents significant modularization through use of object oriented design principles. Standard Totalflow applications can be enabled in our factory or by the user, one or more times on the same device. It is this framework that allows the support for multi-tube measurement and allows the user to enable only the applications that they may require.

Standard software applications include:

- AGA3 orifice measurement
- ISO 5167 orifice measurement
- VCone measurement
- AGA7 rotary/turbine/ultrasonic measurement
- Gas Coriolis measurement
- Trending; extremely flexible data logger, easily configured by user
- PID control (AO only)
- RAMS (Alarming, Exception Reporting)
- EZ Blocks (graphical, similar to "function block", simple custom math / logic)
- IEC 61131 (complex math / logic)
- Selectable Units (user selectable engineering units)
- Tank Level Application
- Therms master application (MODBUS master interface to gas chromatograph)
- Therms slave application (MODBUS slave interface to gas chromatograph)
- Totalflow NGC (gas chromatograph) Ethernet interface
- Multiple protocols: Totalflow native low power, MODBUS slave (RTU/ASCII), MODBUS master (RTU/ASCII), LevelMaster, Enron MODBUS (includes historical data)
- Advanced user configurable Plunger Lift applications
- MODBUS Multivariable sensor interface
- Trending (extremely flexible and powerful user configurable data logger)
- Pump controller (normally used in Coal Bed Methane wells to control "down hole" pumps)

General Specifications	
Dimensions	Nominal Diameter : 6 inches (15.24 cm)
	Nominal Length : 8 inches (20.32 cm)
Weight	Nominal : 16.5 pounds (7.48 kg)
Enclosure	Type 3R / IP53 with breather drain installed; Type 4X / IP66 without breather drain
Certification	CSA C/US Class 1, Div 1, Groups C, D T6; IECEx Ex d IIB T6; ATEX  II 2 G Ex d IIB T6
Mounting	Pipe Mount
Operating Temperature (ambient)	-40 to 140°F (-40 to 60 °C)
Mechanical Vibration	Tested according to procedures derived from IEC 60068-2-6. Meets or exceeds 10-60 Hz 0.075 mm displacement amplitude / 60-500 Hz 1g specifications taken from IEC 61298-3.
EMC Requirements	<p>EMMISSIONS: <i>European Regions:</i> EN55022 Class B Emissions (Radiated) <i>North America Regions:</i> CFR 47, Part 15, Subpart B, Class B, FCC Emissions ICES-003 Issue 2, Rev. 1, Class B ITE Emissions</p> <p>IMMUNITY: <i>European Regions:</i> EN 61000-6-1 Immunity: EN61000-4-2:95, ESD, ±8 k V Air, ±4 k V Contact EN61000-4-3:95 RF Immunity, 10 V/m EN61000-4-4:95 EFT, 2 k V EN61000-4-6:95 Conducted Susceptibility, 10Vrms EN61000-4-8:93 Power Frequency Magnetic Field 3A/m</p>
Electronics	
Power	External DC voltage 9 to 30 VDC
Memory	<ul style="list-style-type: none"> Program execution and data stored in 32MB PSRAM (lithium battery backup) Windows CE Operating System, Application programs, and Configuration files stored in 64MB Flash
Communications Ports	<ul style="list-style-type: none"> 3 - dedicated PCCU Local Configuration Ports; 1- RS232, 1- USB (both ports available internally; user must specify which of these ports is to be utilized at the optional external MMI connection when ordering), and standard Class I Bluetooth wireless 2 - remote: RS232, RS485 or RS 422 (Software Selectable) 1 - 10BaseT Ethernet
EX Device Current Draw	<ul style="list-style-type: none"> Basic single Differential measurement application without additional I/O ~25 mA @ 13.8 V (~345 mW) Bluetooth device enabled but not paired with host device: ~0 ma (~0 mW) Bluetooth device enabled and paired with host (not transferring data) ~8 mA @ 13.8 V (~110 mW) Bluetooth device enabled, paired and communicating with host ~15 mA @ 13.8 V in short bursts; not continually (~207 mW) Ethernet enabled: ~18.6 mA @ 13.8 V (~257 mW) I/O Daughter Card DO are optically isolated. ~5.1 mA @ 13.8 V per DO when closed (~71 mW)
LCD Interface	Dedicated interface for 4 x 16 Liquid Crystal Display (LCD)
Security Switch	On/Off Dual-level On-board Security Switch; also supports Enhance Role Based Access Control (user configurable, multilevel, multi-user security)
Time Base Stability	± 7.5 ppm (parts per million)
Scan Rate	All Inputs Sampled at 1Hz Rate
AGA3/AGA7/ISO5167/VCone Calculations	Calculations are tested to be within ± 50 ppm (parts per million) as stated in API 14.3.4

Integral Multivariable (EXIMV) Specifications	
Multivariable Unit	
Temperature Limits	Compensated -20 to 140°F (-29 to 60°C) Operational -40 to 140°F (-40 to 60°C) Storage -40 to 185°F (-40 to 85°C)
Resolution	24 Bit analog-to-digital conversion (0.000012% FS) (0.0012% FS effective signal resolution)
Mounting Specification	Change from perpendicular (front to back / around x-axis) ≤ 0.5% URL (can be corrected with calibration)
Reference Conditions	Temperature at most recent factory or user calibration: static pressure and differential pressure ≤ 100% of URL
Static Pressure	
Accuracy (including linearity, hysteresis, & repeatability at reference conditions)	± 0.075% of User Calibrated Spans from 20% to 100% of URL
Ambient Temperature Effect within the Operational Temperature Limit	± 0.075% of URL ± 0.06% of Reading
Stability (for 12 months)	± 0.1% of URL
Reproducibility	± 0.1%
Differential Pressure (XFC^{G4} 6200EX Differential version only)	
Accuracy (including linearity, hysteresis & repeatability at reference conditions)	± 0.075% of User Calibrated Spans from 20% to 100% of URL
Ambient Temperature Effect within the Operational Temperature Limit	± 0.075% of URL ± 0.06% of Reading
Stability (for 12 months)	± 0.1% of URL
Reproducibility	± 0.1%
Static Pressure Effect (DP Zero)	± 0.03% of URL per 1500 PSI (103.42 bar); 3200 PSI (220.63 bar) maximum
Static Pressure Effect (DP Span)	± 0.1% of reading per 1500 PSI (103.42 bar); 3200 PSI (220.63 bar) maximum
Temperature	
Process Range	-80 to +750°F (-62 to 399°C)
Accuracy (as shipped from factory)	± 0.35°F (± 0.2°C) over operating range
Accuracy (after single point field calibration)	± 0.2°F (± 0.12°C) repeatability over operating range

Available Ranges XFC ^{G4} 6200EX (Differential version)				
	DP (inches H ₂ O)			
AP (psia)		500	1500	3200
	250	X	X	
	400	future	future	future
	800	X	X	future

Available Ranges XFC ^{G4} 6201EX (Linear version)				
AP (psia)	100	500	1500	3000

EXIMV Sensors	
Single Seal Rated (ANSI/ISA 12.27.01)	6200EX (DP/SP): P _{Max} = 3000 psi 6201EX (SP): P _{Max} = 1450 psi - Wetted materials meet NACE MR0175/ISO 15156 - Process Fluids: -62°C to 110°C

Power and Productivity
for a Better World. TM

www.abb.com/totalflow
www.abb.us
www.abb.com



ABB Inc.
Totalflow Products
 7051 Industrial Blvd.
 Bartlesville, OK 74006
 Tel: (918) 338-4888
 Fax: (918) 338-4699
 (800) 442-3097

ABB Inc.
Totalflow Products
 433 Northpark Central Dr., Ste. 100
 Houston, TX 77073
 Tel: (281) 869-5212
 Fax: (281) 869-5203
 (800) 442-3097

For more information,
 please contact your
 local ABB Totalflow
 representative or visit
 our website.